





**Chip** → 6 Farben 6 Colours



**Strapazierwert** extrem → **Komfortwert** gut → **Verwendungsbereich** Stuhlrolle, Treppe → **Material der Nutzschicht** 100% PA Antron® → **Poleinsatzgewicht** ca. 750 g/m<sup>2</sup> → **Brandverhalten** C<sub>fl</sub>-s1  
**Wear criteria** extreme → **Comfort criteria** good → **Application** Chair castor, stairs → **Pile material** 100 % PA Antron® → **Pile weight** approx. 750 g/m<sup>2</sup> → **Fire behaviour** C<sub>fl</sub>-s1

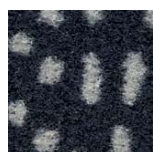
Technische Daten S. 94 Technical specifications p. 94



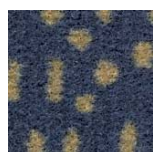
6153



6155



6154



6152



6151



6150

**Chip** Cut

Variante

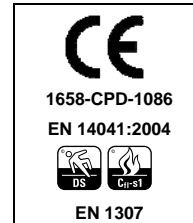


**Produktspezifikation (nach DIN EN 1307)**

auch lieferbar als

Herstellungsart	(ISO 2424)	1/10" Tufting
Material der Nutzschicht	(Direktive 71/307/CEE modifiziert)	100 % Polyamid Antron®
Oberseitengestaltung	(ISO 2424)	Velours
Farbgestaltung	(ISO 2424)	gemustert

Beanspruchung				
gering	mittel	stark	intensiv	extrem
Komfort				
einfach	gut	hoch	luxuriös	prestige



**Funktionseigenschaften:**



**Umwelteigenschaften**

DIBt-AgBB Schema	AbZ.: Z-156.601-26	<a href="http://www.dibt.de">www.dibt.de</a>
GuT - Richtlinien	Lizenz-Nr.: 17107	<a href="http://www.gut-ev.de">www.gut-ev.de</a>
PRODIS	Lizenz-Nr.: 1CC62A5A	<a href="http://www.pro-dis.info">www.pro-dis.info</a>
EPD (Environmental Product Declaration)	EPD-GUT-2009311-D	<a href="http://www.bau-umwelt.com">www.bau-umwelt.com</a> Institut Bauen und Umwelt e.V.

**Kennzeichnende Merkmale**

Lieferart	(ISO 3018)	400 cm Bahnen
Träger-/Grundmaterial	(ISO 2424)	PES-Spinnvlies
Rückenausführung	(ISO 2424)	synthetischer Textilrücken
Flächengewicht	(ISO 8543)	ca. 2.000 g/m <sup>2</sup>
Gesamtdicke	(ISO 1765)	ca. 6,3 mm
Polschichtgewicht	(ISO 8543)	ca. 540 g/m <sup>2</sup>
Poleinsatzgewicht	(Herstellerangabe)	ca. 750 g/m <sup>2</sup>
Polschichtdicke	(ISO 1766)	ca. 4,5 mm
Pol - Rohdichte	(ISO 8543)	ca. 0,12 g/cm <sup>3</sup>
Noppenzahl	(ISO 1763)	ca. 282.500 /m <sup>2</sup>

**Bauphysikalische Eigenschaften**

Elektrostatistische Aufladbarkeit	(EN 1815)	≤ 2 KV
Oberflächenwiderstand	(ISO/DIS 10965)	≤ 10 <sup>9</sup> Ω
Durchgangswiderstand	(ISO/DIS 10965)	≤ 10 <sup>9</sup> Ω
Trittschallschutz	(ISO 140-8)	ca. 25 dB
Schallabsorptionsgrad	(ISO 354)	α <sub>w</sub> 0,20
Wärmedurchlaßwiderstand	(ISO 8302)	ca. 0,08 m <sup>2</sup> k/W
Brandverhalten	(EN 13501-1)	Cfl-s1

**Echtheiten**

Lichtechtheit	(ISO 105-B02)	≥ 5
Reibechtheit (naß/trocken)	(EN ISO 105-X12)	≥ 3 / ≥ 3-4
Wasserechtheit	(EN ISO 105-E01)	≥ 4

Stand 11/2009

Durch technische Weiterentwicklungen bedingte Änderungen vorbehalten

Toucan-T GmbH  
Carpet Manufacture

St. Töniser Str. 84  
D - 47803 Krefeld

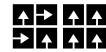
Fon +49 80) 21 51 / 84 19-0  
Fax +49 80) 21 51 / 84 19-99

[service@toucan-t.de](mailto:service@toucan-t.de)  
[www.toucan-t.de](http://www.toucan-t.de)



**Chip** Cut

version

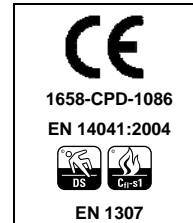


**Product specification in accordance with DIN EN 1307**

also available as

Manufacturing process	(ISO 2424)	1/10" tufted
Pile material	(Directive 71/307/CEE modified)	100 % Polyamid Antron®
Surface	(ISO 2424)	Cut Pile
Coloration	(ISO 2424)	patterned

Wear criteria				
low	normal	strong	intensiv	extrem
Comfort Criteria				
standard	good	high	luxury	prestige



**Performance properties**



**Environmental & Sustainability**

DIBt-AgBB Schema	AbZ.: Z-156.601-26	<a href="http://www.dibt.de">www.dibt.de</a>
Gut - guidelines	Licence No. 17107	<a href="http://www.gut-ev.de">www.gut-ev.de</a>
PRODIS	Licence No. 1CC62A5A	<a href="http://www.pro-dis.info">www.pro-dis.info</a>
EPD (Environmental Product Declaration)	EPD-GUT-2009311-D	<a href="http://www.bau-umwelt.com">www.bau-umwelt.com</a> Institut Bauen und Umwelt e.V.

**Characteristic features**

Width	(ISO 3018)	400 cm
Primary backing	(ISO 2424)	PES-non woven
Secondary backing	(ISO 2424)	synthetic textile backing
Total weight	(ISO 8543)	ca. 2.000 g/m <sup>2</sup>
Total height	(ISO 1765)	ca. 6,3 mm
Pile weight above backing	(ISO 8543)	ca. 540 g/m <sup>2</sup>
Pile weight	(manufacturer information)	ca. 750 g/m <sup>2</sup>
Pile height	(ISO 1766)	ca. 4,5 mm
Pile density	(ISO 8543)	ca. 0,12 g/cm <sup>3</sup>
Number of tufts	(ISO 1763)	ca. 282.500 /m <sup>2</sup>

**Structural properties**

Electrostatic properties	(EN 1815)	≤ 2 KV
Surface resistance	(ISO/DIS 10965)	≤ 10 <sup>9</sup> Ω
Volume resistance	(ISO/DIS 10965)	≤ 10 <sup>9</sup> Ω
Impact noise	(ISO 140-8)	ca. 25 dB
Sound absorption factor	(ISO 354)	α <sub>w</sub> 0,20
Thermal insulation	(ISO 8302)	ca. 0,08 m <sup>2</sup> k/W
Fire behaviour	(EN 13501-1)	Cfl-s1

**Color fastness values**

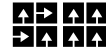
Light fastness	(ISO 105-B02)	≥ 5
Rubbing fastness	(EN ISO 105-X12)	≥ 3 / ≥ 3-4
Water fastness	(EN ISO 105-E01)	≥ 4

Last revision 11/2009

We reserve the right for technical changes while maintaining the service properties of the carpet

## Chip<sup>Cut</sup> Bitumen SL Fliese

version

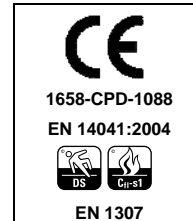


### Product specification in accordance with DIN EN 1307

also available as

Manufacturing process	(ISO 2424)	1/10" tufted
Pile material	(Directive 71/307/CEE modified)	100 % Polyamid Antron®
Surface	(ISO 2424)	Cut Pile
Coloration	(ISO 2424)	patterned

Wear criteria				
low	normal	strong	intensiv	extrem
Comfort Criteria				
standard	good	high	luxury	prestige



### Performance properties



### Environmental & Sustainability

DIBt-AgBB Schema	AbZ.: Z-156.601-551	<a href="http://www.dibt.de">www.dibt.de</a>
Gut - guidelines	Licence No. 23676	<a href="http://www.gut-ev.de">www.gut-ev.de</a>
PRODIS	Licence No. 0FD14FBA	<a href="http://www.pro-dis.info">www.pro-dis.info</a>
EPD (Environmental Product Declaration)	EPD-GUT-2009411-D	<a href="http://www.bau-umwelt.com">www.bau-umwelt.com</a> Institut Bauen und Umwelt e.V.

### Characteristic features

Width	(ISO 3018)	50 x 50 cm tiles
Primary backing	(ISO 2424)	PES-non woven
Secondary backing	(ISO 2424)	Bitumen heavy backing
Total weight	(ISO 8543)	ca. 5.000 g/m <sup>2</sup>
Total height	(ISO 1765)	ca. 7,5 mm
Pile weight above backing	(ISO 8543)	ca. 540 g/m <sup>2</sup>
Pile weight	(manufacturer information)	ca. 750 g/m <sup>2</sup>
Pile height	(ISO 1766)	ca. 4,5 mm
Pile density	(ISO 8543)	ca. 0,12 g/cm <sup>3</sup>
Number of tufts	(ISO 1763)	ca. 282.500 /m <sup>2</sup>

### Structural properties

Electrostatic properties	(EN 1815)	≤ 2 KV
Surface resistance	(ISO/DIS 10965)	≤ 10 <sup>9</sup> Ω
Volume resistance	(ISO/DIS 10965)	≤ 10 <sup>9</sup> Ω
Impact noise	(ISO 140-8)	ca. 25 dB
Sound absorption factor	(ISO 354)	α <sub>w</sub> 0,20
Thermal insulation	(ISO 8302)	ca. 0,11 m <sup>2</sup> k/W
Fire behaviour	(EN 13501-1)	Cfl-s1

### Color fastness values

Light fastness	(ISO 105-B02)	≥ 5
Rubbing fastness	(EN ISO 105-X12)	≥ 3 / ≥ 3-4
Water fastness	(EN ISO 105-E01)	≥ 4

Last revision 11/2009

We reserve the right for technical changes while maintaining the service properties of the carpet