



S. 34-35 p. 34-35: Ray X 3.1 → links left: Ray X 1.1 → oben above: Ray X 3.1



reddot design award
winner

Ray X 1.0 → 3 Farben 3 Colours

Ray X 1.1 → 5 Farben 5 Colours

Ray X 3.1 → 4 Farben 4 Colours



Strapazierwert extrem → **Komfortwert** einfach → **Verwendungsbereich** Stuhlrolle, Treppe → **Material der Nutzschicht** 100 % PA → **Poleinsatzgewicht** ca. 300-550 g/m² → **Brandverhalten** C_{fl}-s1
Wear criteria extreme → **Comfort criteria** standard → **Application** Chair castor, stairs → **Pile material** 100 % PA → **Pile weight** approx. 300-550 g/m² → **Fire behaviour** C_{fl}-s1

Technische Daten S. 93 *Technical specifications p. 93*

Ray X 1.0



7042



7041



7040

Ray X 1.1



7005



7003



7002



7000



7004

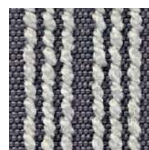
Ray X 3.1



7023



7022



7021



7020

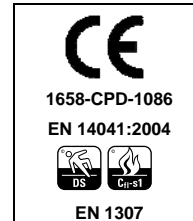
Ray-X 3.1 Filz

version 

Product specification in accordance with DIN EN 1307

Manufacturing process	(ISO 2424)	1/8" tufted
Pile material	(Directive 71/307/CEE modified)	100 % Polyamide
Surface	(ISO 2424)	rips structure
Coloration	(ISO 2424)	patterned

Wear criteria				
low	normal	strong	intensiv	extrem
Comfort Criteria				
standard	good	high	luxury	prestige



Performance properties



Environmental & Sustainability

DIBt-AgBB Schema	AbZ.: Z-156.601-26	www.dibt.de
Gut - guidelines	Licence No. 22993	www.gut-ev.de
PRODIS	Licence No. CBDFBC1B	www.pro-dis.info
EPD (Environmental Product Declaration)	EPD-GUT-2009311-D	www.bau-umwelt.com Institut Bauen und Umwelt e.V.

Characteristic features

Width	(ISO 3018)	400 cm
Primary backing	(ISO 2424)	synthetic fabric
Secondary backing	(ISO 2424)	Synthetic non woven backing
Total weight	(ISO 8543)	ca. 2.400 g/m ²
Total height	(ISO 1765)	ca. 5,5 mm
Pile weight above backing	(ISO 8543)	ca. 165 g/m ²
Pile weight	(manufacturer information)	ca. 375 g/m ²
Pile height	(ISO 1766)	ca. 1,4 mm
Pile density	(ISO 8543)	ca. 0,12 g/cm ³
Number of tufts	(ISO 1763)	ca. 70.000 /m ²

Structural properties

Electrostatic properties	(EN 1815)	≤ 2 KV
Surface resistance	(ISO/DIS 10965)	≤ 10 ⁹ Ω
Volume resistance	(ISO/DIS 10965)	≤ 10 ⁹ Ω
Impact noise	(ISO 140-8)	ca. 19 dB
Sound absorption factor	(ISO 354)	α _w 0,20
Thermal insulation	(ISO 8302)	ca. 0,06 m ² k/W
Fire behaviour	(EN 13501-1)	Cfl-s1

Color fastness values

Light fastness	(ISO 105-B02)	≥ 5
Rubbing fastness	(EN ISO 105-X12)	≥ 3 / ≥ 3-4
Water fastness	(EN ISO 105-E01)	≥ 4

Last revision 11/2009

We reserve the right for technical changes while maintaining the service properties of the carpet